

PRONTO xi



Technology
The right tools for the job

© Copyright 2018 Pronto Software Limited.
All rights reserved.

740 Solutions Overview: Technology

Trademarks

© PRONTO, PRONTO ENTERPRISE MANAGEMENT SYSTEM, PRONTO SOFTWARE (Logo) and Pronto Xi, are trademarks registered by Pronto Software Limited (ABN 47 001 337 248) in the United States of America, Australia and other countries.

™ Trademarks of Pronto Software Limited (ABN 47 001 337 248).

IBM® and Cognos® are trademarks of International Business Machines Corporation.

Microsoft, Excel and PowerPoint are registered trademarks of Microsoft Corporation in the United States and/or other countries.

Disclaimer

This document contains statements related to our current and future developments that may constitute forward-looking statements. They are subject to change and may be available in a 740 service pack or future release of Pronto Xi.

Technology Contents

4	Making it work
6	Core platform
6	Pronto Xi Runtime
8	Pronto Xi Screen Customiser
10	Application Services
10	Message Bus and Message Broker
12	Administration
12	Pronto Xi System Administration
13	Data Quality Management
14	Code Table Status Control
16	Pronto Xi web interface
18	Workspaces
19	Enterprise Search
20	Enterprise security
20	Secure by design
20	Two-factor authentication
20	Application security
20	Secure infrastructure
21	Forms management
21	Pronto Xi TrueForm Neo
23	Tasks and Alerts
23	Pronto Xi Alert Intelligence
23	Pronto Xi Task Intelligence
23	Pronto Xi Data Intelligence
24	Pronto Connect API platform
26	Developer tools
26	Rapid Application Development (RAD)
27	Software Development Kit (SDK)
27	Real-time trace control

Deployment Contents

28	Deployment
28	Cloud ERP
29	On premises

Technology

Making it work

Continual improvement ensures Pronto Xi has the strength to support the changing demands of modern-day organisations.

Now, more than ever, businesses need a modern Enterprise Resource Planning (ERP) platform that is flexible enough to adapt to a changing world. Users expect a fast and responsive web interface that's accessible no matter where they are.

Mobile and web technologies have become mainstream and continue to rapidly evolve. Demand for cloud-based technology and services is exploding as businesses realise the benefits of their low cost, quick deployment and hassle-free maintenance. In short, connectivity has become a necessity, not a luxury.

With Pronto Xi, you get to stay ahead of the curve. Underpinning our enterprise applications is a flexible and highly robust infrastructure, combined with a user experience that is fast, highly accessible and designed for user delight.

Cloud-based services give you greater flexibility to structure and deploy your package of Pronto Xi modules. Your staff can access most Pronto Xi modules wherever they are, on a variety of devices.

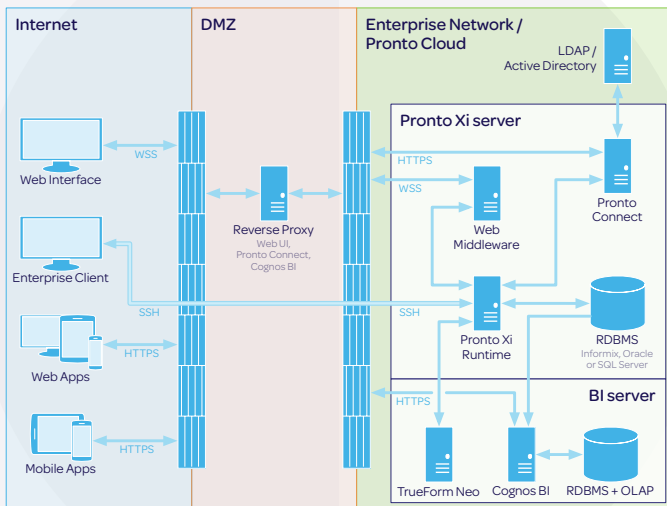
Core platform

A virtually bulletproof core infrastructure underpins the modular Pronto Xi Enterprise applications. It begins with the 'nuts and bolts' that allow the system to operate: the relational database, the operating systems, the Pronto Xi Runtime; and the web or desktop user interface.

Web interface

Built on modern web technologies and combining intensive user research with concepts from Google Material, the web interface frees Pronto Xi from the office. You and your people can transact, report, analyse in every Pronto Xi module, from anywhere, with zero installation. Plus it's the best-looking Pronto Xi ever.





Pronto Connect

Connect your legacy systems and complementary solutions to your Pronto Xi backbone with a comprehensive API framework and development platform. Your systems can exchange data effortlessly, securely and in real time.

Applistructure

Because we understand that no two businesses are the same, we have developed an 'Applistructure' solution that makes it easy to tailor your Pronto Xi modules to exactly fit your needs. So our software adapts to your business needs and processes, not the other way around.

Administration

Administrators have ready access to day-to-day maintenance tasks, such as performing backups, setting up new users, and defining the permissions and security settings for users, as well as a host of other routine functions.

Security

With increased adoption of mobile and Cloud technologies, security has never been more important. We take your security seriously, and Pronto Xi includes a range of security technologies and mechanisms to protect your organisation.

Developer tools

For businesses that want to do their own customisation, development tools can be provided, including the Rapid Application Development (RAD) and a Software Development Kit (SDK). The same tools are used by Pronto Software's own development and professional services teams.

All this, and you can relax knowing we'll continue to update Pronto Xi so it's always compatible with the latest versions of supported operating systems, databases, web browsers and business applications.

Core platform

Where everything clicks

The core platform of Pronto Xi gives you a robust, enterprise grade foundation. It's a powerful launch pad for powerful business performance.

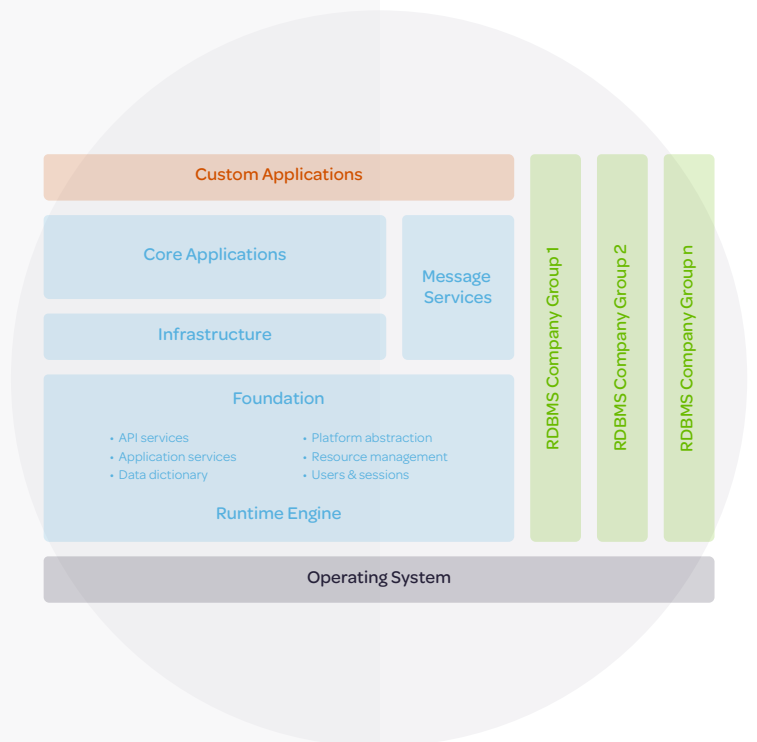
Pronto Xi Runtime

The Pronto Xi Runtime 'brokers' communication between Pronto Xi applications and the underlying IT platform.

With technology-independent architecture, Pronto Xi Runtime supports multiple combinations of hardware, operating systems (OS) and relational database management systems (RDBMS).

Key features include:

- Technology abstraction for porting applications to multiple platforms
- Execution and management of the applications and general system environment
- High availability and high volume transaction processing





Powerful and flexible, relational database support

Pronto Xi is optimised to take advantage of the benefits a relational database brings to high performance transactional processing environments, as well as support the reporting and analytical needs of Pronto Xi Business Intelligence.

While the major databases – IBM Informix, Oracle and Microsoft SQL Server – are supported, Pronto Xi is strongly aligned with IBM Informix to ensure your data management is as simple and efficient as possible. IBM Informix provides proven reliability, security and performance, and in combination with Pronto Xi it offers:

- A fully featured RDBMS infrastructure
- Reliable and secure data storage
- Fast and flexible transaction processing
- Virtually zero administration
- Flexible levels of resiliency – for example, High Availability Data Replication (HDR), Remote Secondary Server (RSS) and Continuous Log Restore (CLR)
- Scalable configuration from simple to high level
- Cross-platform support (Redhat Linux, IBM AIX and Microsoft Windows Server)
- Standard Open Database Connectivity (ODBC), supporting a broad range of information management applications

IBM Informix offers some of the best scalable performance metrics for online transaction processing (OLTP) in the market. Some sites run tens of millions of transactions through a single data server every day.

In addition, it's designed for 'hands-free' administration, making it perfect for organisations wanting to get more from their information without needing to invest in additional technical support.

Pronto Xi Screen Customiser

Optimise user efficiency and minimise input errors with Pronto Xi Screen Customiser, an administrator-level customisation tool. You can change Pronto Xi screens, create remove and modify fields, change default values, and even apply rules to data within fields — for any company, group or user.

Change screen prompts and fields

Move screen prompts and fields, edit text, or change font, colour and size.

Change field defaults

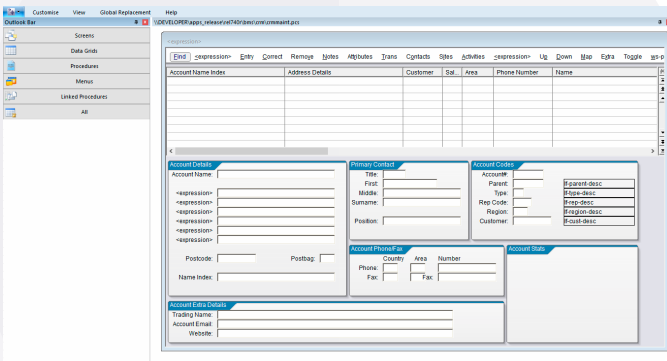
Field defaults may be predefined for different operators or different levels of operator. For example, all Sydney-based operators may want the default warehouse to be 'SYD'.

Hide fields, buttons and screen prompts

Where a field is not necessary — because it will always contain the same value, or is not used — it can be suppressed.

Make fields 'read-only'

Change an editable field to a read-only field, so the content cannot be altered.



Change field/button help

While Pronto Xi has built-in context-sensitive help, administrators can include company-specific help information as well.

Add screen, field or button triggers

Launch a process external to the basic logic of the screen based on user activity. For example, calculate the starting value of a field based on previously entered information or notify a manager if a sales order exceeds a specified dollar amount.

Create user-defined buttons

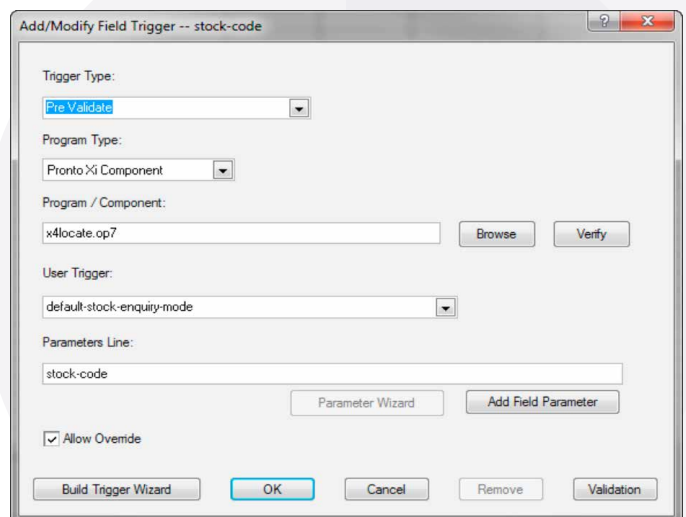
Create additional buttons on a screen to launch processes that you define.

Allow access to user-definable fields

A set of fields is included in many of the master and transaction tables, which companies can use for their own supplementary data storage. Screen Customiser allows these fields to be easily included in regular input screens.

Add calculated or lookup fields to data-grids and forms

Ensure that the screen being used is as information-rich as you like by including data from other tables or information that is calculated on the fly.



Application Services

With a clever Applications Services daemon, Pronto Xi programs can be scheduled without needing to set up scheduled tasks at the operating system level. All running services are checked at one-minute intervals to determine whether any program is due for execution.

You can set up Application Services to perform backups, run reports and update functions according to predefined values. It can even be used to control such vital functions as end-of-period processing, real-time data synchronisation across databases, streaming updates and message-based functions used to communicate between distributed servers, databases and applications.

Processes can be set-up to run multiple times during the day, or at any given time-point. Every time a program is executed it is logged for easy and direct verification.

A single service can be set up to execute a program in multiple companies, either concurrently or consecutively. As all services operate independently, there is no risk of a job not being executed because the execution of a program by another service has failed.

Message Bus and Message Broker

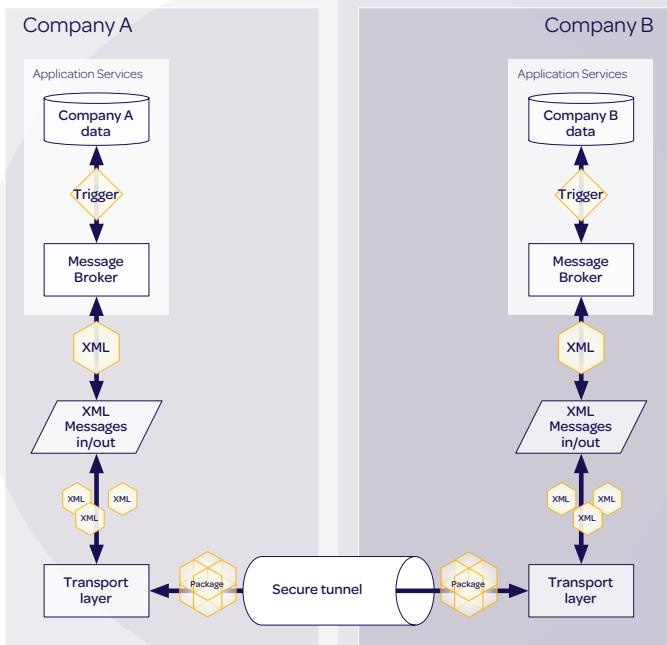
Message Bus allows for the sharing of data between two disconnected Pronto Xi databases or companies. It is ideal where reliable synchronisation between data sets on remote sites is required, such as franchise systems that share a common inventory database or Point of Sale (POS) systems where redundancy is used.

Data can be selectively shared between remote installations, employing a 'publish and subscribe' methodology to ensure efficient message delivery and synchronisation.

At the heart of Message Bus is Message Broker, which manages the message queues and processes the message data. It identifies Pronto Xi datasets both locally and remotely and automatically handles the exchange of data between datasets on the same physical server.

Message Broker is independent of any communication protocols, so it functions consistently and reliably whatever communication medium it is working over. There are also several measures included to enhance security and data quality, including message validation routines to ensure that what is sent is exactly what is received.

Intelligent business tasks can also be performed without user intervention, such as masking data in certain fields depending on the subscriber. Message Broker also contains a 'refresh' function to bring remote datasets into line with a master dataset in case of data corruption or hardware failure.



Extensibility

The Service Oriented Architecture (SOA) of Message Broker allows high levels of customisation without compromising stability. At each stage, standard business rules can be 'replaced' with custom business rules to suit your particular needs.

Franchise inventory

A key requirement for franchise operations is the quality of inventory information. With Message Broker, core inventory data is selectively shared with franchisees. You can set up a 'staging area', allowing master data changes to be held back from broadcast until the desired time. For example, price changes can be sent at a scheduled time ahead of a promotion.

POS redundancy

POS redundancy uses the advanced technology of Message Bus to keep remote servers synchronised with head office. Incremental changes are continually sent to remote servers so that stores can trade with the most up-to-date information.

Administration

Take control of day-to-day administrator tasks, from performing backups and setting network protocols to defining roles and security settings, with complete ease.

Pronto Xi System Administration

Not only can you specify which Pronto Xi modules you want to use, but with System Administration you can also specify how you intend to use them. In other words, the options chosen will, to a large extent, control the way that Pronto Xi works for you.

While many processes only need to be performed once during installation, you'll always have the flexibility to fine-tune your set-up down the track. Additional System Administration functions may be used for ongoing maintenance or 'housekeeping'.

The System Administration utility provides a menu of functions for administering Pronto Xi. Incorporated into this is the ability to maintain certain related parts of the UNIX/Linux system without the need to remember complicated command lines or file formats. For example:

- Backup/Restore Data
- User Control
- Terminal Control
- Printer Control
- Batch Queue Admin
- Database Control

Roles and securities

User level access is controlled by a wide selection of roles and security profiles. Systems Administration level staff can tailor user permissions to restrict user access to individual companies, entire modules or specific functions within screens across Pronto Xi.

When new users are created they are assigned one or multiple roles to define their authorised access to Pronto Xi. A role contains a list of Pronto Xi modules and functions to speed up assignments. Wildcards can be used to indicate all functions.

You can also allow multi-company operation and specify which companies or directories each user may access. Or even define the access each user has in each company.

Develop your own roles to define a job function according to your company's needs, or simply go with Pronto's 'out-of-the-box' roles. User-defined functions can also be created and added to an existing role.

Data Quality Management

Data Quality Management (DQM) increases system availability by reducing the downtime caused by administration processes. DQM has new data checking programs that supersede the integrity routines in prior versions of Pronto Xi.

Faster data check-up

By default, DQM only checks changed data, making the entire procedure more efficient. Users can control the frequency of DQM processes via Application Services and define the type of checks to run.

Better visibility

A Data Quality dashboard displays the status of DQM processes as well as all identified issues.

Easy data clean-up

DQM groups issues by module and classifies them as referential, calculated or orphan/other.

Users can manage data issues as they arise by correcting master records or perform bulk replacements. DQM will validate the corrected data, removing the issue from the DQM Dashboard.



Code Table Status Control

With active/inactive status for the warehouse, territory, item group and sales representative code tables, use of a code can be prevented. A suitable date can be selected to warn users of an upcoming change of status.

Data masking

To complement the tight and flexible functional security of Pronto Xi, System Administration provides data masking to restrict access to certain application data. Through the Custom Authentication Protocol (CAP), all data masking is also automatically obeyed in Pronto Xi Business Intelligence reporting.

The screenshot shows a dialog box titled "Warehouse Code Status" with a "P" icon in the top left corner. The dialog is divided into several sections:

- Warehouse Code:** Code: 000 - Type 0; Status: **Inactive**
- Items Directly Affected:** Inventory: 18; Customers: 6; Sales Orders: 9; Purchase Orders: 26
- Inactive Date & Warning Preferences:** Inactive Date: 14-FEB-2017; Time: 08:00:00; Warning Date: 14-FEB-2017

At the bottom of the dialog are "OK" and "Cancel" buttons.

Client Name	Standard	Composite Key	Opers...	Audit Date Time	User	Changes	Program	Params	
deb-master	"BANKS"	U	Update	13-NOV-2015 09:22:33	shamrock	credit limit="F1" F2, de credit limit amount=1000000.000.00	apps00webbetaformsdefh	m	
deb-master	"BEG2000"	U	Update	11-JUL-2014 10:07:56	robertg	credit limit="F1" F2, de credit limit amount=0.000000.00	apps00webbetaformsdefh	m	
deb-master	"BEG2001"	U	Update	25-NOV-2015 10:33:07	meastada	charkumar="Black Fire Systems" "Blue Fire Systems"	apps00webbetaformsdefh	m	
deb-master	"BORG002"	I	Insert	17-NOV-2015 16:03:40	psstjane		apps00webbetaformsdefh	m	
deb-master	"CHECK"	I	Insert	17-NOV-2015 16:06:33	psstjane	credit limit="F1" F2	apps00webbetaformsdefh	m	
deb-master	"CHECK"	U	Update	18-OCT-2015 09:25:29	shamrock		apps00webbetaformsdefh	m	
deb-master	"CKC"	I	Insert	24-NOV-2015 15:37:56	chamblab		apps00webbetaformsdefh	m	
deb-master	"EGE001"	I	Insert	05-OCT-2015 11:55:03	psstjane		apps00webbetaformsdefh	m	
deb-master	"HEATCOOD"	I	Insert	17-NOV-2015 16:16:49	psstjane		apps00webbetaformsdefh	m	
deb-master	"JONES123"	I	Insert	09-OCT-2015 08:13:49	etrcal		apps00webbetaformsdefh	m	
deb-master	"LANDLEASE"	I	Insert	17-NOV-2015 10:43:14	psstjane		apps00webbetaformsdefh	m	
deb-master	"LANDLEASE"	U	Update	24-NOV-2015 10:03:21	psstjane	de cust type="S1"	apps00webbetaformsdefh	m	
deb-master	"LANDLEASE"	U	Update	24-NOV-2015 10:03:43	psstjane	de de status="S1"	apps00webbetaformsdefh	m	
deb-master	"LANDLEASE"	U	Update	28-NOV-2015 10:05:00	psstjane	credit limit="F1" F2, de credit limit amount=0.0000000000.00	apps00webbetaformsdefh	m	
deb-master	"MATE"	I	Insert	09-OCT-2015 13:41:37	psstjane		apps00webbetaformsdefh	m	
deb-master	"MATE"	U	Update	14-OCT-2015 14:21:33	psstjane	credit limit="F1" F2	apps00webbetaformsdefh	m	
deb-master	"MATE"	U	Update	14-OCT-2015 14:21:44	psstjane	credit limit="F1" F2, de credit limit amount=0.0000000000.00	apps00webbetaformsdefh	m	
deb-master	"PRNLS"	I	Insert	06-OCT-2015 13:55:53	psstjane		apps00webbetaformsdefh	form	
deb-master	"PRNLS"	U	Update	24-NOV-2015 09:13:35	psstjane	credit limit="F1" F2, de credit limit amount=0.00000000.00	apps00webbetaformsdefh	m	
deb-master	"REG003"	I	Insert	11-OCT-2015 10:52:56	psstjane		apps00webbetaformsdefh	m	
deb-master	"REG001"	I	Insert	17-NOV-2015 16:23:56	psstjane		apps00webbetaformsdefh	m	
deb-process-attributes	"MARKETCALLMOBINT"	I	Insert	23-NOV-2015 14:38:50	psstjane		apps00webbetaformsdefh	m	
deb-process-attributes	"MARKETCALLMOBINT"	I	Insert	23-NOV-2015 11:01:15	psstjane		apps00webbetaformsdefh	m	
deb-process-attributes	"MARKETCALLMOBINT"	I	Insert	23-NOV-2015 14:38:57	psstjane		apps00webbetaformsdefh	m	
deb-revenue-sqls-defaults	"AGE001" "ACC"	I	Insert	05-JUL-2017 11:05:53	johnh		apps00webbetaformsdefh	AGE001 -msmt	
deb-trans	"AGE001"	338" "000008"	U	Update	05-JUL-2017 11:07:29	johnh	de de revenue date=0000080000	apps00webbetaformsdefh	m
deb-trans-type-desc	"TOP"	I	Insert	28-APR-2015 10:15:05	psst		apps00webbetaformsdefh	enabling 0	

Auditing

Pronto Xi audits many activities within the system and monitors changes to master records and major function flags. This gives you total control over the changes that are made to your system, and keeps you informed about users making changes.

System Audit can create reports on changes made to system settings, who made them and when. Further audit reports record changes to 'static' master files, as well as transaction processing.

Audit Management provides a strong audit capability by recording data changes (insert, delete and update) to key files. Files defined as requiring audit are flagged at a dictionary or schema level.

The Audit Management menu allows authorised staff to configure the audit environment. Administrators can determine the number of days to include in each log file, and the number of log files to retain. You can also define which users have security access to audit information for specific data tables.

- Pronto Xi Business Intelligence administration

With Pronto Xi, your administrators have complete flexibility to ensure your Business Intelligence suite provides the right information to the right people. They can set access controls and user capabilities as well as other reporting server functions, such as:

- Server setup
- URL path maintenance
- Data source configuration
- Calendar and time dimension settings

Pronto Xi web interface

Fast, faster, pronto

A modern user interface that performs flawlessly on a range of platforms. Now with Workspaces, a drag-and-drop canvas for displaying a range of charts from your KPIs.

Our innovative approach to User Experience (UX) design is all about simplifying processes and making you more productive. Using modern web technologies, the Pronto Xi web interface delivers a fast and responsive work environment that's accessible no matter where you are or what device you're using.

Designed for user delight

Modern and simple, the web interface makes navigating screens and menus, entering and viewing data, running reports, and configuring user preferences and favourites extremely straightforward. A variety of data entry methods are catered for, whether you're using a keyboard and mouse or a touch-screen mobile device.

Whichever Pronto Xi modules you are using, there is a consistency in format and function that makes learning new modules quick and easy.

Highly accessible

Using a web interface means you can do what you need to do, when you need to do it, from a variety of devices and without any software installation. For system administrators, rolling out updates, or adding users is very straightforward.

Integrated back pane

An integrated back pane allows business system information to be delivered to any users within your organisation directly from the Pronto Xi web interface. This is particularly useful for simple access to Pronto Xi Business Intelligence workspace items such as reports and business dashboards.

In addition, corporate intranets, external websites, corporate noticeboards, executive information systems, interactive workflow diagrams or customised web pages can be easily accessed.

Data grids

Data grids allow users to view Pronto Xi data in a tabular format. Data can be filtered, sorted and highlighted according to each user's preferences, and exported to a spreadsheet (such as Microsoft Excel, Office 365 Excel Online or Google Sheets) or an XML report.

Maintain control of data entry by setting personal field defaults. For example, when creating a new customer account a user may always use a specific customer type. The personal field defaults enable screens to suggest field values appropriate for the user's role or department.

Data grids will also auto-scale to maximise the full real-estate of your display, ensuring you have the best view of your information, as you need it.

Quick Links

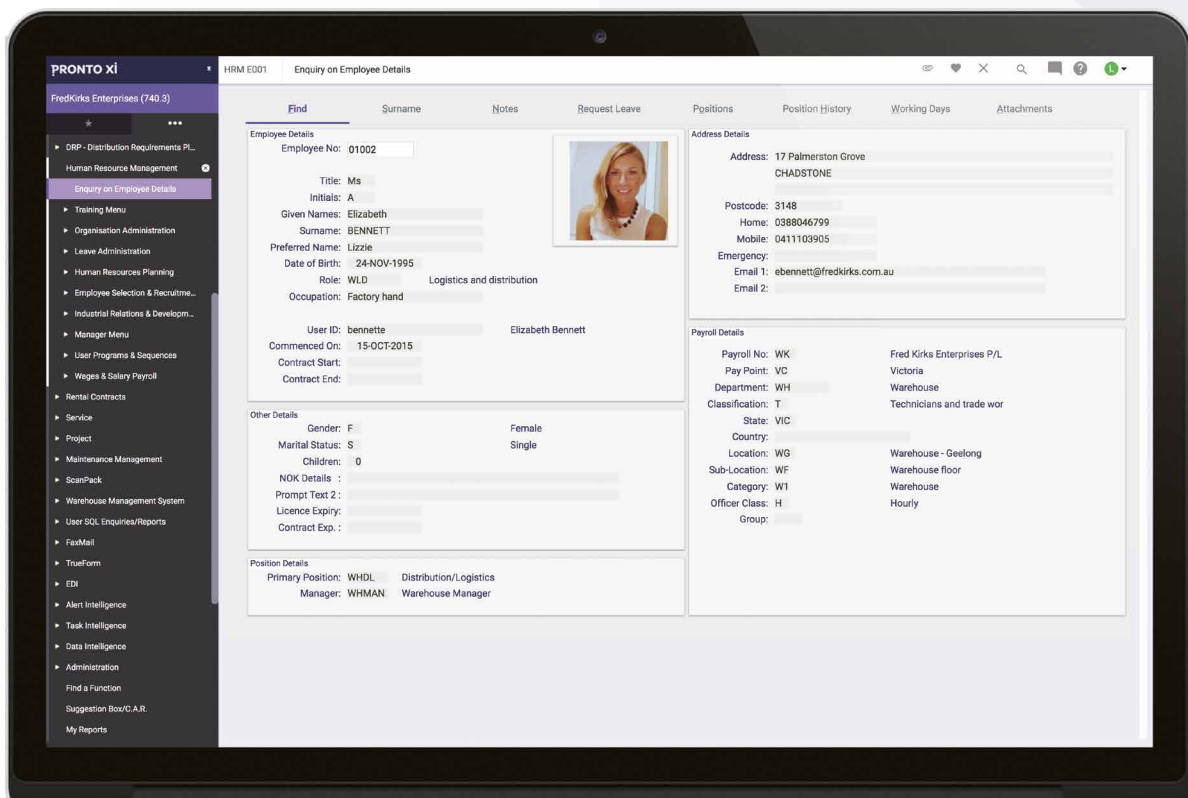
Quick Links allows you to attach any file, website or network location to anything in the Pronto Xi database. This means you can associate images, documents, spreadsheets, PDF files, movies or web pages with any stock item, customer, supplier, sales order, purchase order line, or any other element within Pronto Xi.

With a button on the toolbar, links can be opened directly from the Pronto Xi screen. This makes performing routine tasks much more efficient.

Powered by the latest web-socket technology to ensure a fast user experience

Fast user performance, and real-time field-level validation is delivered using the latest in web-socket technologies.

This means that data entry validation happens at a field-level in real time, not at the end once the form is submitted. Not only does this avoid user frustration due to lag time and data re-entry common with web applications, it also ensures that business process rules are followed during a transaction. Altogether this makes the user more productive, helping them to complete their tasks as efficiently as possible.



Full Pronto Xi within a web browser



Elegant and intuitive to navigate



Supports personalisation and shortcuts



Increased user productivity



Quick to learn and easy to use



Available on a range of devices



Stateful and secure connection between web interface and server



Web socket technology delivering real-time, field-level validation and entry



HTML5 and CSS3



Latest web UX methodologies

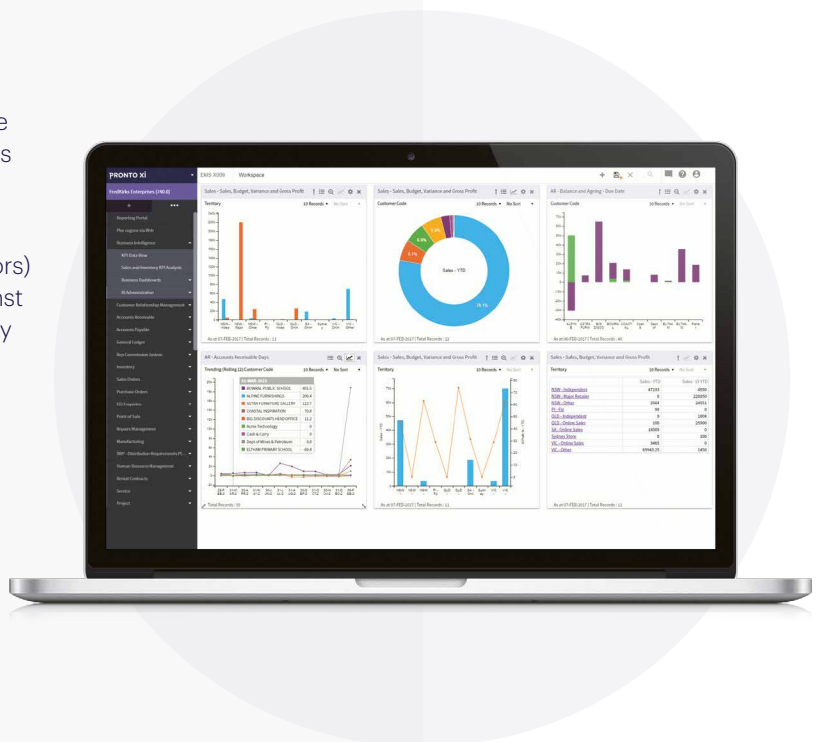
Workspaces

An interactive, drag-and-drop canvas that displays real time and relevant information to each staff member, Workspaces facilitates decision-making and priority setting while enhancing collaboration across your organisation.

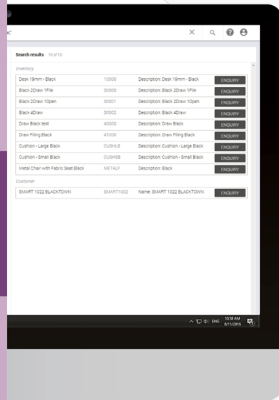
Choose from more than 80 KPIs (Key Performance Indicators) and other widgets. In one click, see how you perform against your personal KPIs. Enhance user personalisation with many options to format data, including:

- Selection of chart types
- Trends over a period of time
- Sorting, filtering and more

Workspaces is an optional, alternative view to the right-hand pane that displays web pages, workflows and company information.



Search



Enterprise Search

With Enterprise Search now added to the web interface, finding frequently used data or menu functions is now just a click away.

Search all available modules or select the ones that are most relevant. Each search result presents a range of options – for example, searching for a stock item code gives you the options to:

- Maintain or enquire on the item
- Do a stock adjustment
- Do a QA release

You can also define the default actions for various users.

Enterprise security

Your safety is our priority

Pronto Xi utilises best practices in application security, and offers a range of security settings to keep your organisation safe.

Secure by design

Pronto Xi utilises security standards and industry best practices to maximise the security of your organisation. For example, communications use digital certificates and highly secure protocols such as HTTPS and WSS (WebSockets over SSL/TLS).

Regular security penetration testing also helps to ensure that your organisation remains protected against new and evolving security threats.

Two-factor authentication

A large proportion of modern data breaches involve a weak, lost or stolen password. When two-factor authentication is active, a secondary verification code is required when logging into Pronto Xi, in addition to a password. The code changes every 30 seconds each single code can only be used once, which significantly improves user login security.

Application security

Administration tools enable user permissions to be scoped to individual companies, modules, screens or functions, through use of roles and security profiles. Through screen customisation, even the individual fields that a user sees can be controlled.

Additionally, data masking limits which data a user can access. For example, access can be restricted to individual locations, territories, branches, asset groups and much, much more.

Segregation of duties can be achieved using some or all of these application security capabilities.

Secure infrastructure

Pronto highly recommends the use of digital certificates and reverse proxy servers to maximise the security of surrounding infrastructure. Pronto and its partners have expertise in deploying infrastructure that has your security needs at the forefront.



Forms management

Your documents, personalised

An easy to use solution for creating standard and customised forms in Pronto Xi. Print barcodes and labels, and distribute your documents directly from Pronto Xi via email.

Pronto Xi TrueForm Neo

Pronto Xi TrueForm Neo allows you to format and personalise all customer-facing and business documents, and distribute them from Pronto Xi.

Form designer

With an intuitive design interface, TrueForm Neo makes it easy to create high-quality, professional forms, including invoices, statements, purchase orders, credit notes, pick-slips, payslips and many others.

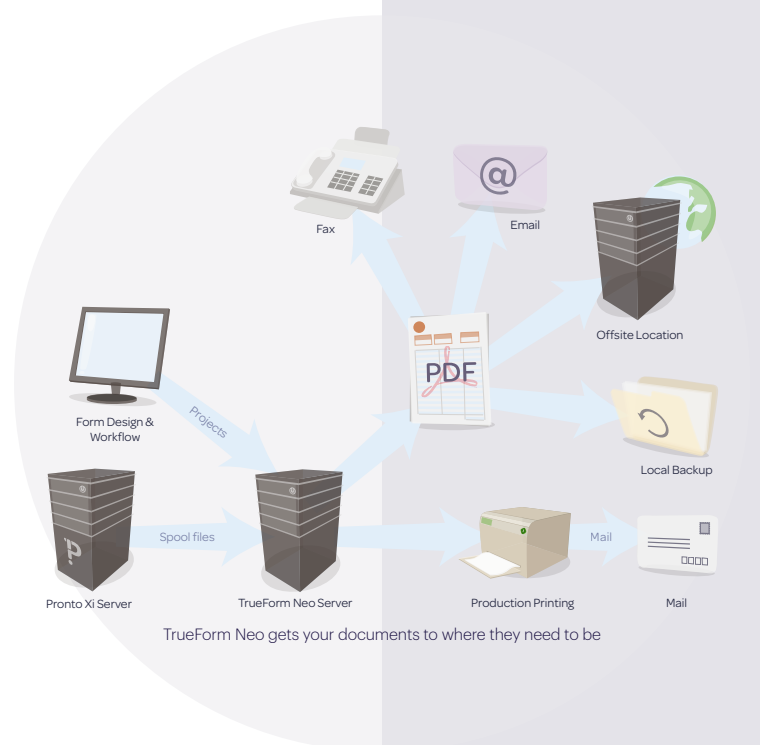
Boxes, lines and other graphic elements, as well as images such as company logos, can be accurately positioned wherever required to ensure professional looking output.

Fonts and barcodes

Barcode and label printing is native to the TrueForm Neo environment so any piece of data (Item Code, Customer Code, Invoice Number etc.) can be automatically converted into a barcode or QR code format at print time.

Pagination control

TrueForm Neo handles all pagination requirements, giving you control over your page design.



Templates

With a range of standard templates available in both landscape and portrait formats, TrueForm Neo gets you up and running quicker with key business forms important for your business. These include;

- Sales Order Quotation
- Sales Order Picking Slip
- Sales Order Delivery Docket
- Sales Order Confirmation
- Sales Order Tax Invoice
- Sales Order Credit Note
- Sales Order Transfer
- Payment Summaries
- Overdue Letters
- Purchase Order
- Customer Statement
- EFT Remittance
- Payslip
- Advanced Warehouse Picking Slip

All standard templates contain alternate row shading for the detail area of the forms, placeholders for logos and data mapping from standard Pronto Xi fields.

Conditional display

Data, static text and graphic formatting can be made conditional upon data within the form, allowing businesses to operate in multiple languages, use different logos for different trading names, or suppress certain fields for particular customers.

Printer queue management

Managed as part of a central server component, TrueForm Neo allows management of print queues which allows administrators to control an array of functions, including printer queue configuration and the management of log files.

Form output management

By converting manual procedures into a single, automated electronic process, Pronto Xi TrueForm Neo ensures business documents are distributed efficiently. Its features include:

- An intuitive interface to define document distribution rules and workflow
- Simplified print queues
- Reduced (or eliminated) physical document storage and distribution costs
- Automatic conversion of raw Pronto Xi data into professionally published PDF documents for distribution
- Dynamically defined document names and save locations for simple archiving

You can also email and fax any Pronto Xi document or report directly from Pronto Xi. This reduces postage costs and the labour costs of folding, addressing and posting documents. It also means the time taken to do a monthly statement run can be reduced from days to minutes through full automation of document delivery.

Tasks and Alerts

Intelligent, informative, efficient

Automation and efficiency tools to keep your operations running like clockwork.

Pronto Xi Alert Intelligence

Alert Intelligence provides automated alerts to facilitate exception management. It's easy to define what events will trigger a notification, who will be notified, and what action should be taken.

Typical events include when an unusually high transaction is processed through Pronto Xi Accounts Payable, when inventory levels have dropped below minimum, or when a service call has been allocated to a technician.

Alert Intelligence is not just limited to monitoring events. It can also periodically check the status of any record, or set of records, at scheduled times. For example, a manager could establish a monthly Alert Intelligence task that raises an alert when expenses exceed budget by more than 10%.

Pronto Xi Task Intelligence

Pronto Xi Task Intelligence extends the functionality of Alert Intelligence to ensure tasks are carried out quickly and efficiently. You can assign staff to carry out particular tasks and automatically synchronise these tasks with each person's Microsoft Outlook or Office 365 task list.

A range of criteria can be applied, including how the staff member should be notified, how much time has been allocated and the priority of the task. You can also specify a time for a reminder notice to be sent and provide feedback about the status of the task.

Pronto Xi Data Intelligence

Data Intelligence makes it easy for your staff to extract and present data. Data tables can be filtered, sorted and highlighted to suit individual needs, and exported to non-Pronto formats such as XML, OpenDocument Spreadsheet (ODS), Comma Separated Value (CSV), and Microsoft Office Excel if desired.

Data Intelligence also includes a range of tools to help you find and secure information within your data tables. A Data Finder will allow you to search for a particular value across multiple tables, while a Table Security tool offers protection for valuable data by specifying who can access which tables.

Pronto Connect API platform

Global in, global out

Using industry-standard web services architecture, Pronto Connect enables application mobility or integrates your external applications and platforms with Pronto Xi.

Advances in mobile communications have made data transfer, smart phones and tablet computers inexpensive and widely available. The technologies that enable real-time data transfer to and from platforms are now faster, more reliable and more secure. HTML5 and JavaScript make it possible to create adaptive user interfaces that work on many devices.

Making information flow work

The introduction of Application Programming Interfaces (APIs) has simplified the exchange of data between unconnected applications or processes.

APIs help developers create ways for applications to exchange data freely and efficiently, without human intervention. This reduces data double-handling and human error, allowing for substantial increases in productivity and cost-efficiency.

The most popular kind of API is REpresentational State Transfer (REST). Pronto Connect offers standard, out-of-the-box RESTful APIs as well as a development environment that lets you create custom APIs to improve your information flow.

Technical capabilities at a glance

- Dynamic data transfer using web-services
- Document-based APIs (XML, JSON)
- Incoming web-services API calls
- Outbound HTTP calls via the Pronto Xi Runtime
- Secure certificate and LDAP (Active Directory) based user authentication
- Secure data transfer using Secure Socket Layer (SSL)



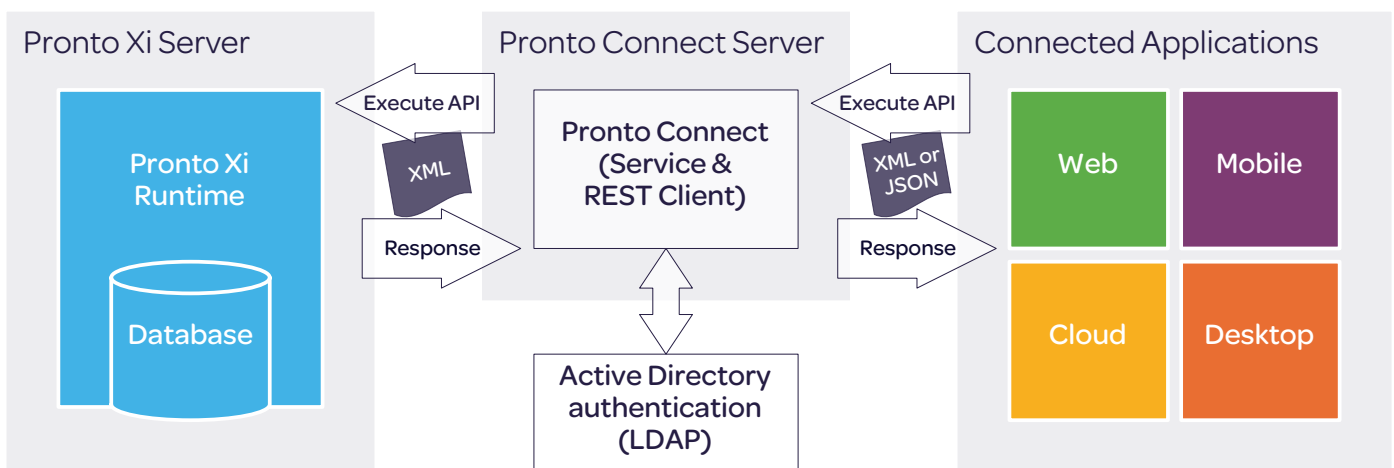
Benefits of web-services

There are several benefits of using web services architecture instead of traditional 'flat file' or field-based API connectivity approaches:

- Real-time information exchange, meaning processes can be completed using up-to-date information, not yesterday's data
- User authentication, so only those who are entitled to access and view data can do so
- No need to maintain a flat file transfer mechanism, which saves time and money
- Fewer upload or synchronisation errors thanks to a reliable messaging system that ensures requested data is delivered as expected

Platform compatibility and support

An ongoing commitment is provided to ensure Pronto Xi remains compatible with the latest versions of operating systems, databases, business applications such as Microsoft Office, and popular web browsers such as Internet Explorer, Firefox, Chrome and Safari. This protects your investment in existing cloud-based or on-premises software tools by linking them to your back-office Pronto Xi platform.



Pronto Connect interacts with Pronto Xi and connected applications

Developer tools

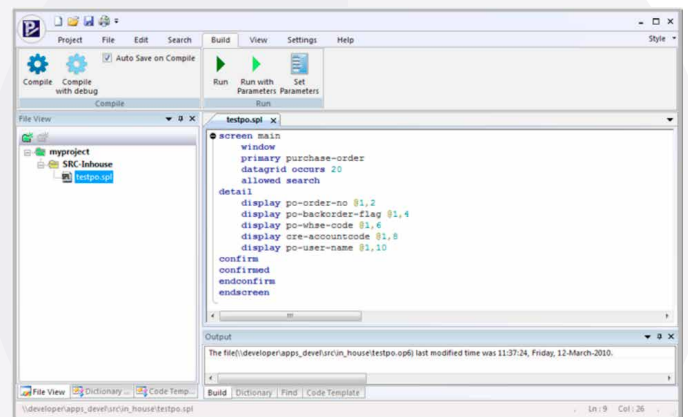
The right tools for the job

If you're looking to make deeper levels of codebase customisation, your development team can use exactly the same tools as ours.

Rapid Application Development (RAD)

Pronto RAD (Rapid Application Development) is a fully integrated, fourth-generation language facility that enables developers to extend or generate applications within Pronto Xi, ranging from the simplest to the most complex, with a minimum of time and effort. Pronto RAD incorporates the following features:

- Data dictionary (database) generation and maintenance
- 4GL – The fourth generation language that most Pronto Xi applications are written in
- SQL – A query language facility for general reports and ad hoc user queries
- LST – The default report generator used with SQL
- RPT – An alternative to LST for more complex reports
- Screen-based application generation and maintenance routines
- Interactive program debugging facilities



Software Development Kit (SDK)

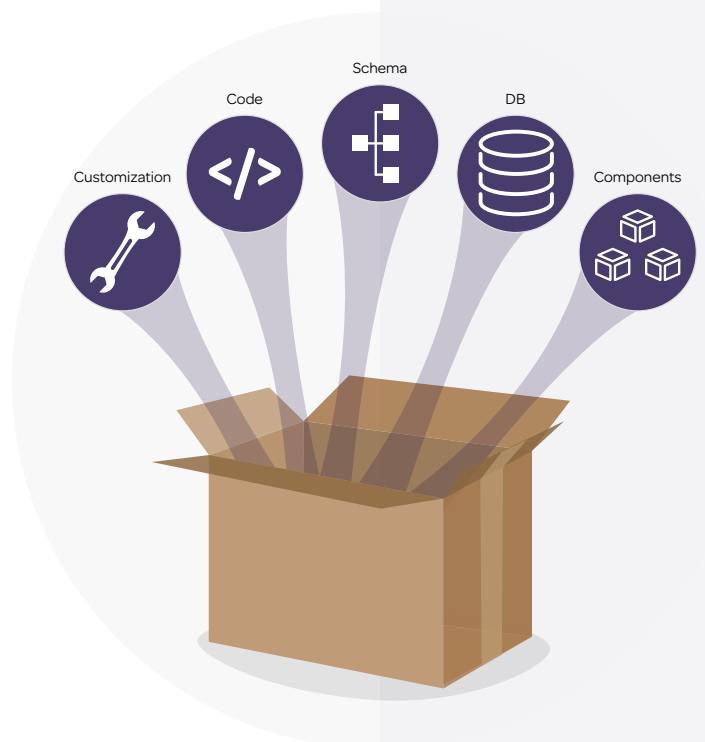
The Pronto Xi SDK is a resource centre for Pronto Xi developers. The SDK can be used in combination with the RAD. It includes documentation, code samples, tips, tools and utilities – all collected into a central repository that continually evolves and grows over time as our community requires new programmatic functionality.

The SDK contains detailed technical information, covering:

- Pronto Xi Object ActiveX control
- Component libraries, comprising both core and publicly exportable procedures
- API calls
- Program calling methods
- Suppressed data entry fields
- Dictionary objects and fields
- Code samples

Real-time trace control

Real-time trace control is a diagnostics utility that allows the activity of Pronto Xi functions to be tracked, stored and reported. Used by both developers and support teams, this function traces input/output (disk reads/writes), procedures and the environment under which a program has been executed. It is helpful when testing or troubleshooting custom code changes using the RAD.



Deployment

Secure, scalable infrastructure that's always on

Pronto Software has a range of flexible deployment options to suit your implementation needs. While on-premises installation is still a smart option for some businesses, technology advancements have many customers realising the benefits of Pronto Cloud.

Cloud implementation offers a range of benefits for business, from lower up-front licence costs to a reduced need for in-house IT resources. It also enables users to access their critical business data from anywhere in the world.

Traditional on-premises deployment suits businesses which need a customised solution, or where there is a business requirement to have IT systems housed on company property.

Cloud ERP

Pronto Cloud provides a new implementation option for businesses looking to lower their costs and remove the complexity of managing their own hardware requirements.

Because Pronto handles the infrastructure, businesses choosing cloud ERP have significantly lower up-front costs than an on-premises implementation. In addition to removing the need for capex, cloud ERP implementation means no need for spending on things like ongoing hardware support.

Pronto Cloud can even host non-Pronto Xi data in our data centres for you, enabling you to remove your server room completely.

A key strength of Pronto Cloud is in our secure and purpose built data centres located across Australia. Pronto offers guaranteed uptime rates of up to 99.99%, and multiple backups of your data stored across data centres.

Data security is an important element for any business. All of our systems receive nightly backups, which are then replicated automatically across multiple data centres. Data recovery can be performed in a matter of minutes.

Cloud implementation offers some advantages for small and medium businesses. It's a scalable solution, meaning you can choose the applications you need, without paying for things you won't use.

In an increasingly mobile business environment, it's important that users have access to critical business data whenever and wherever they are. With Pronto Cloud, you can access your data remotely from anywhere in the world with an internet connection.





On premises

Businesses in some industries, such as financial institutions and government contractors, face strict regulatory requirements on how their data is handled and stored. These companies will typically need to select an on premises implementation and handle their ongoing systems management internally.

Pronto can still help businesses opting for an on premises implementation. Our technical consultants can advise on infrastructure design and modelling, as well as broader IT strategy and future proofing of your IT environment.

In addition we can offer remote monitoring of your systems and provide strategies for data backup and disaster recovery. Backup and recovery are two critical areas for any business, but especially important for those managing their own system implementation. With assistance from the team at Pronto, you can ensure your business is protected.

24/7 phone support and help desk facilities are also available.



The right call

We're always ready to adapt Pronto Xi to perfectly fit your unique requirements.

For more information on what we can do for your business, contact us at 1300 PRONTO (1300 77 66 86) or find us at: www.pronto.net





info@pronto.net
1300 PRONTO (1300 77 66 86)
Find your moment: www.pronto.net

Connect with us

-  [@ProntoSoftware](https://twitter.com/ProntoSoftware)
-  [pronto-software](https://www.linkedin.com/company/pronto-software)
-  [youtube.com/ProntoSoftware](https://www.youtube.com/ProntoSoftware)

Tailor-made business software solutions.

Pronto Software has been developing award-winning business management software for 40 years. With in-built intelligence, flexibility and an easy-to-use interface, its flagship product, Pronto Xi, enables users to discover rich business insights.

Pronto believes in the power of actively listening to clients, adapting our product to meet their needs and finally revealing the best solution. It's how we continually surpass client expectations, delivering moments of utter surprise and delight.