

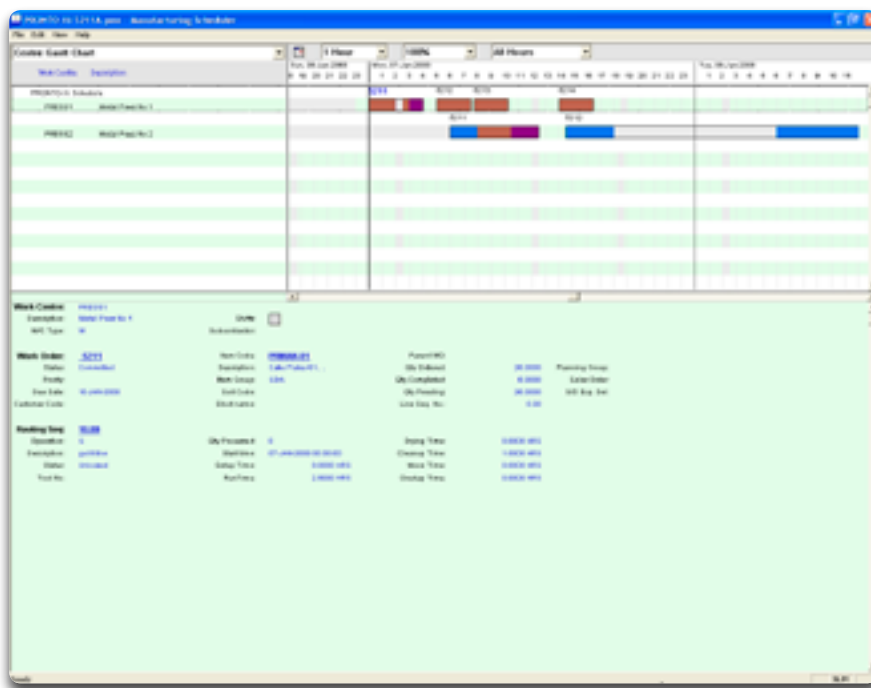
PRONTO-Xi

Manufacturing Scheduler

PRONTO-Xi Manufacturing Scheduler is a visual tool which offers visibility of workload versus available capacity and allows you to manually or systematically manage, sequence and optimize work.

By representing your manufacturing operations visually, Manufacturing Scheduler enables you to assess your work and resource requirements at a glance. You can drag and drop tasks across shifts and accurately measure workload against available capacity which allows you to readily manage your workload.

In addition, Manufacturing Scheduler makes it easy for your shopfloor personnel and planners to quickly react to changing circumstances. Your team is able to optimize operations, adapt to changing priorities and maintain exceptional customer service.



Visual Scheduling

PRONTO-Xi Manufacturing Scheduler is a Windows-based drag and drop application which simplifies scheduling and planning for work centers where many jobs are processed simultaneously. It assists in managing variations in the current schedule, provides at-a-glance information when priorities have changed or a work center is unavailable, and highlights the options available to resolve the change of circumstances. Furthermore, the Manufacturing Scheduler provides a visual warning when work orders are late via a 'red flag' against the operation.



Key Benefits

- ◆ Reduced training needs – The scheduling is done graphically, therefore capitalizing on the general knowledge of users working in standard Microsoft Windows applications
- ◆ Significantly decreases the time needed to schedule activities as the graphic display provides all the information needed for instant decision making
- ◆ Reduced operational cost of a manufacturing operation through better scheduling and resource optimization
- ◆ Sorting and filtering to focus on your critical work centers
- ◆ Replaces manual shopfloor scheduling and the use of physical whiteboards to plan daily production activities

Technology

- ◆ Runs on Windows 2000, XP or Vista;
- ◆ Requires PRONTO-Xi Phase IV (650.7) and the following modules: PRONTO-Xi Foundation, Financials, Distribution, Shopfloor Manufacturing.

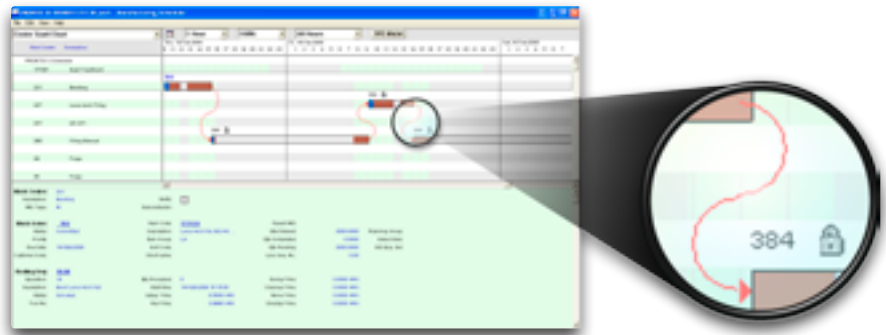


Sequencing and Optimisation

PRONTO-Xi Manufacturing Scheduler is a management tool which matches workload to factory capacity. The auto-sequencing tool allows your planners to optimize changeover times between products during weekly production cycles. Alternative schedules can be developed and saved as "what if" scenarios and the final can be submitted back to PRONTO-Xi. For added flexibility you are able to sequence and optimize work based on user definable parameters.

Flexible Planning Tool

Manufacturing Scheduler can be used at Shopfloor level as an electronic Whiteboard Scheduler or as an extension to the CRP. Information downloaded from PRONTO-Xi includes calendar, work center and work order data. For each work center, the operations can be moved to a new production slot with a simple mouse-click drag and drop. Operations can be sorted based on multiple criteria, and once the order of the jobs is set, Manufacturing Scheduler automatically sequences each operation one after another. Each work center can then be locked and submitted back to PRONTO-Xi.



The Gantt Chart View

The Gantt Chart View displays all operations by work centre, allowing links to be built per work order. It provides a graphical, high level view of how tasks are lined up over time, offering quick insights to critical and non-critical tasks. Manufacturing Scheduler allows drill down into work center or work order views with a single click.

...so easy to work with™

PRONTO-Xi Manufacturing Scheduler is a deceptively simple yet powerful tool which is flexible enough to cater to varying manufacturing environments and operating modes. You get a planning tool which gives you all the sophistication you need, is fully integrated with PRONTO-Xi and is user friendly making it so easy to work with.

About PSA Inc.

As a leader in the enterprise software services industry, PSA Inc., is known for its dedication, professionalism and its comprehensive business knowledge. PSA specializes in providing value added business solutions that are aligned with its clients' goals and expectations. Experienced resources are at the foundation of the PSA organization. With over 300 years of combined experience, our resources have worked in every phase of the enterprise software cycle while also providing 'Best Practices' expertise that remains unmatched in the industry.

PSA is proud to have assisted hundreds of businesses across Canada and the United States in reducing operating costs, improving operating efficiencies and gaining competitive advantages in their marketplaces.



PSA Inc. A Division of Business Solutions Alliance

310 Centre Street South
Whitby
Ontario L1N 4V9
CANADA

Phone +1 905 430 5445
Fax +1 905 430 4604
Support +1 877 272 0411
prontoinfo@PSAinc.ca
www.PSAinc.ca

